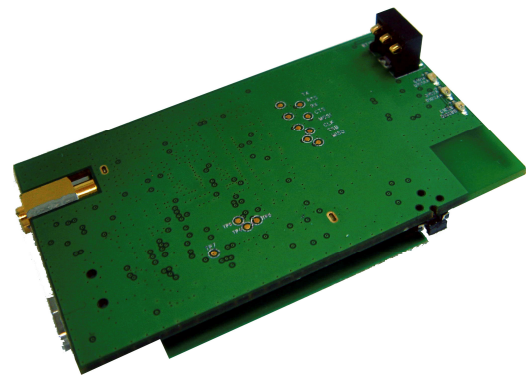
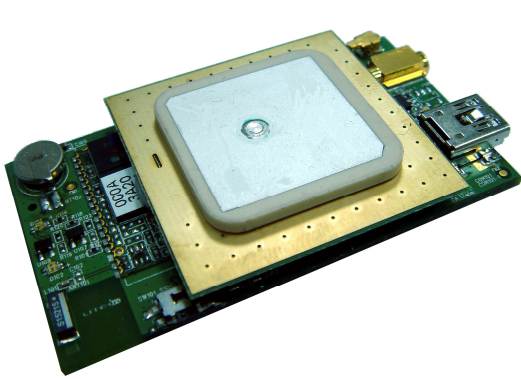
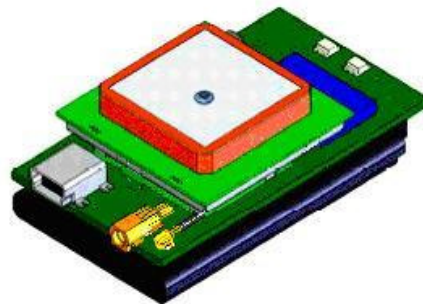
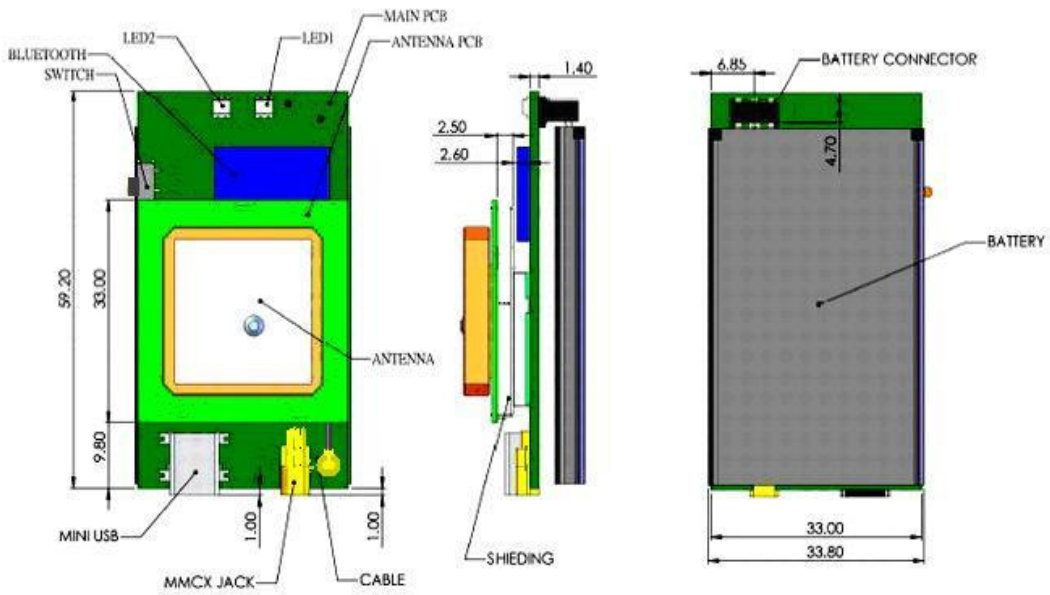


# Bluetooth GPS Module-BGM-100



## Mechanical Drawing



# Specifications

## Main Features

### GPS

#### General

Chipset	SiRF Star III
Channel	Supports 20-channel
Frequency code	L1 (1575.42MHz), CA

#### TTFF (Open Sky)

Hot Start	1sec.
Warm Start	36sec.
Cold Start	42sec.

#### Acquisition Sensitivity

Hot	17dBHz
Warm	23dBHz
Cold	30dBHz

#### Tracking Sensitivity

Position Accuracy 10m, 2D RMS

#### Dynamic Conditions

Altitude(Maximum)	18,000m (60,000ft)
Velocity(Maximum)	515m/sec(1,000knots)
Acceleration(Maximum)	<4g

### Bluetooth

#### General

Frequency	2402MHz to 2480MHz
Transmission Power (Maximum)	4dBm(Class 2)
Hopping	1600hops/sec 1MHz channel space
Receiving Signal Range	-84 to -15dBm
Receiver IF Frequency	1.5MHZ center frequency
Baseband Crystal OSC	16MHz
Compliant	Bluetooth Specification v2.0

### Electrical

Main power input	5±5%VDC
Power consumption	0.33W @ 3.3VDC (Full Power)
Backup Power	1.5 ±10%VDC input
Operation time	10 hours (1000mAh Li-Ion battery)

### GPS Firmware

Protocol	NMEA/SiRF Binary
Baud Rate	9600 bps
Update Rate	1Hz
Datum	WGS84

### Environmental

#### Temperature

Operating Temperature	10 °C to +55 °C
Storage Temperature	20 °C to +65 °C

#### Relative Humidity

5% to 95%, non-condensing

### LED Interface

#### LED 1

Color	BT Active	Low Power
Flashing Blue	@ 2 sec.	-
Flashing Blue	@ 5 sec.	-
Red	-	Yes

#### LED 2

Color	GPS Fix	Battery Charging
Flashing Green	@ 2 sec.	-
Flashing Green	@ 5 sec.	-
Orange	-	Yes

### Dimensions

LxWxH	60.2 x 33.0 x 17.8 mm
Weight	23.7 g (without rechargeable battery)